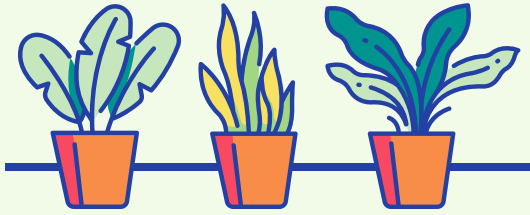


Photosynthesis



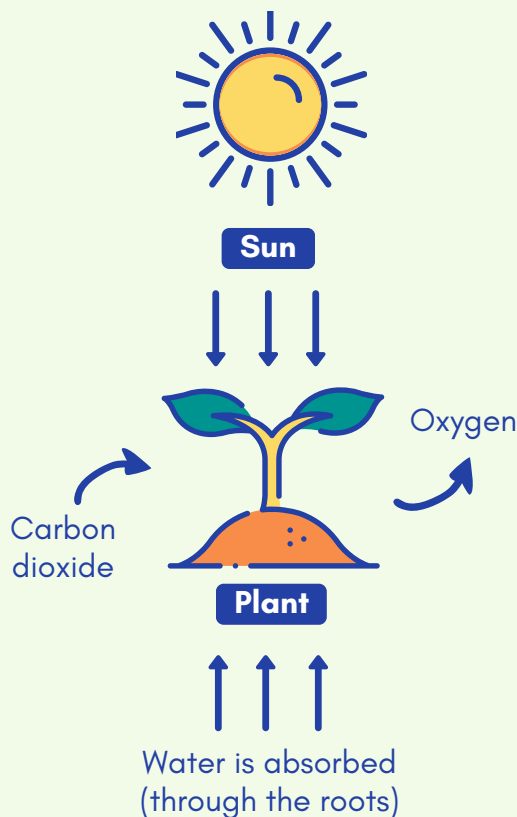
Photosynthesis is the process where plants transform light energy into chemical energy. Plants use this energy to make their own food. The light energy they captured is used to convert carbon dioxide, water, and minerals into oxygen.

Chlorophyll

The pigment that gives plants their green color and helps in the process of photosynthesis.

Did you know?

There are organisms other than plants that can undergo photosynthesis. These include algae and the emerald green sea slug.



The Photosynthesis Process

Plants take in water and carbon dioxide and use energy from the sun to turn them into food.

Within the plant cell, water is oxidized, loses electrons, and is changed into oxygen. Carbon dioxide is reduced, gains electrons, and turns into glucose.

Oxygen is released, and glucose is stored within the plant as energy.

The Photosynthesis Formula

