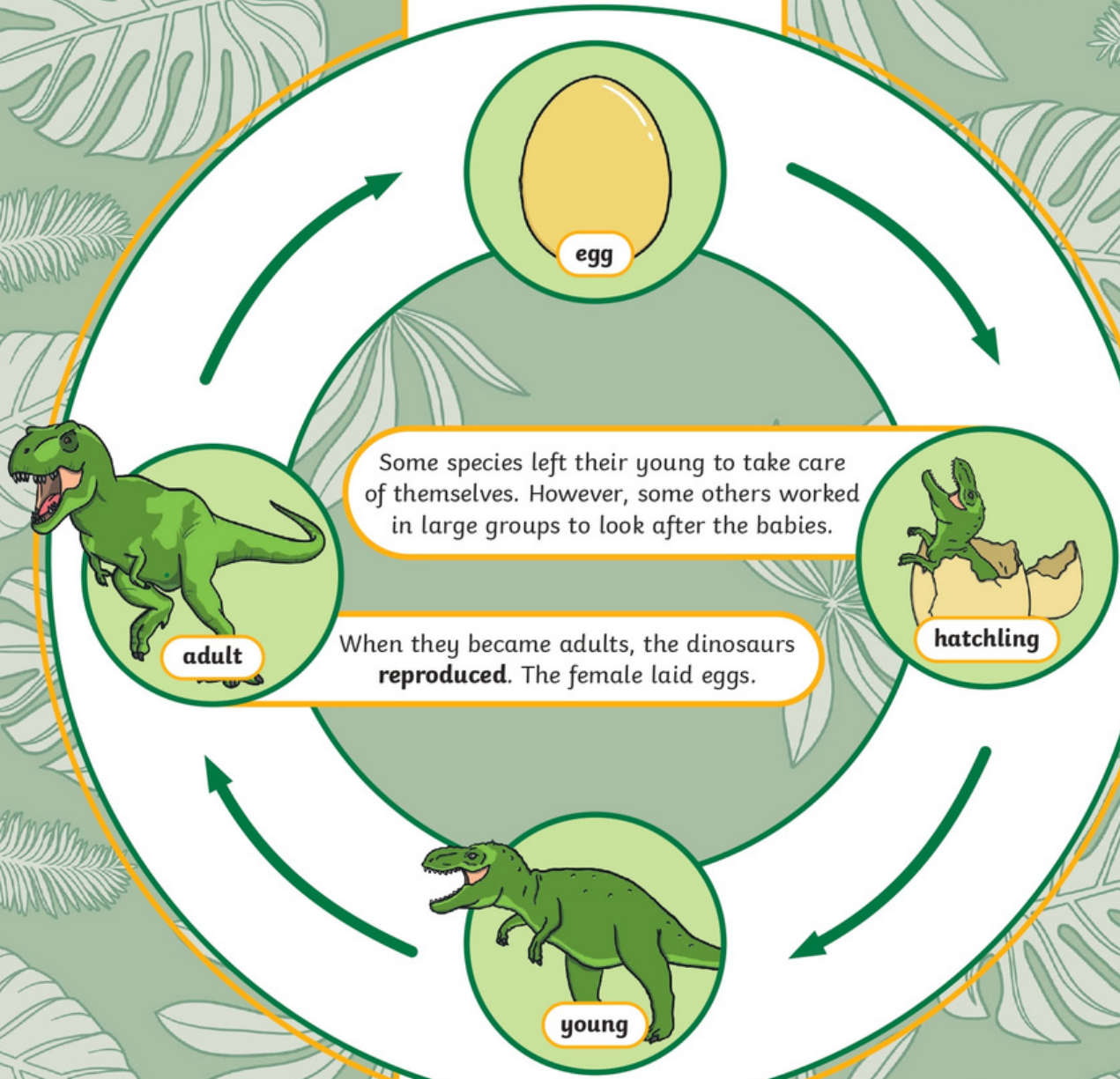


The Life Cycle of a Dinosaur

The size and shape of the egg depended on the species. Most eggs were kept in nests made of mud or in mounds of sand. Some eggs were kept in trees.



Some species left their young to take care of themselves. However, some others worked in large groups to look after the babies.

When they became adults, the dinosaurs **reproduced**. The female laid eggs.

It is believed that many dinosaurs grew quickly when they were young, in the same way that mammals do.

reproduce – When living things make new living things of the same kind.