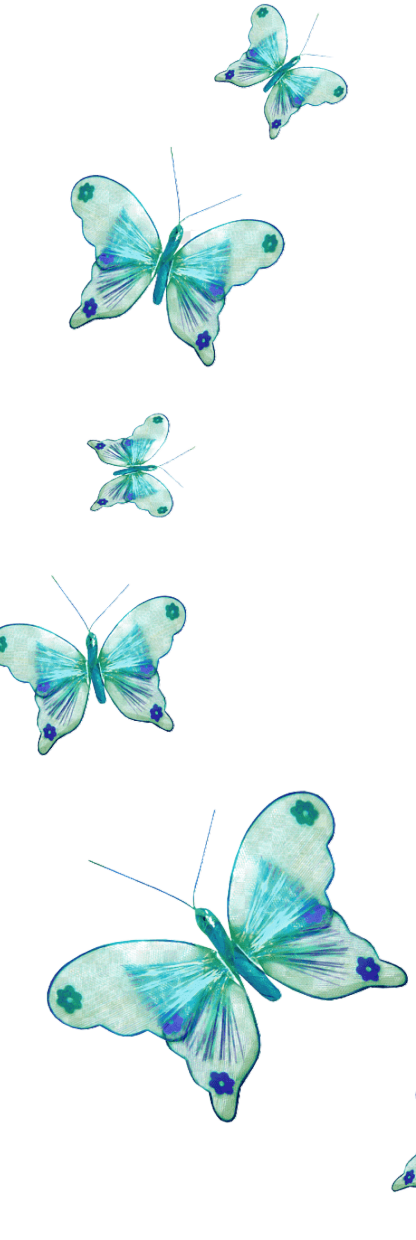


# Tracing



Tracing practice area with five rows of patterns:

- Row 1: Five dashed diagonal lines sloping downwards from left to right.
- Row 2: Five dashed curved lines that start on the left, curve upwards and to the right, then curve downwards and to the right.
- Row 3: Five dotted circles.
- Row 4: Five dotted squares.
- Row 5: Three dashed horizontal lines.

